

## Anti-ENA 78 Rabbit pAb

Purified Rabbit Polyclonal Antibody

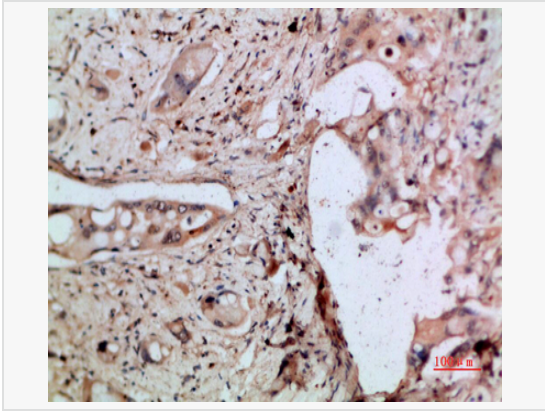
Catalog # P010075

### Product Information

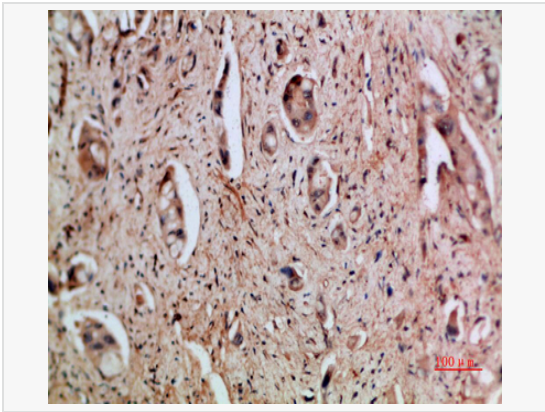
Application	IHC-P/IF (Tissue-P), ELISA
Reactivity	Human
Dilution	IHC-P 1:50~1:100; ELISA 1:10,000
Host	Rabbit
Clonality	Polyclonal
Isotype	IgG
Label	Unconjugated
Immunogen	Synthetic peptide from human protein.
Format	Buffer System: Liquid in PBS containing 50% glycerol, 0.5% BSA and 0.02% sodium azide, pH 7.3. Purification: Affinity Purified.
Storage	Shipped on wet ice. Store at -20°C. Stable for 24 months from date of receipt. Aliquoting is unnecessary for -20°C storage.
Precautions	Anti-ENA 78 antibody is for research use only and not for use in diagnostic or therapeutic procedures.

### Protein Information

Synonyms	AMCFII, Cxcl5, ENA78, SCYB5.
Uniprot ID	P42830
Gene ID	6374
Background	Involved in neutrophil activation. In vitro, ENA-78(8-78) and ENA-78(9-78) show a threefold higher chemotactic activity for neutrophil granulocytes.



Immunohistochemistry analysis of paraffin-embedded Human pancreascancer using ENA 78 antibody. High-pressure and temperature Sodium Citrate pH 6.0 was used for antigen retrieval.



Immunohistochemical analysis of paraffin-embedded Human tonsils using ENA 78 antibody. High-pressure and temperature Sodium Citrate pH 6.0 was used for antigen retrieval.