

Anti-CD80 Rabbit pAb

Purified Rabbit Polyclonal Antibody

Catalog # P010522

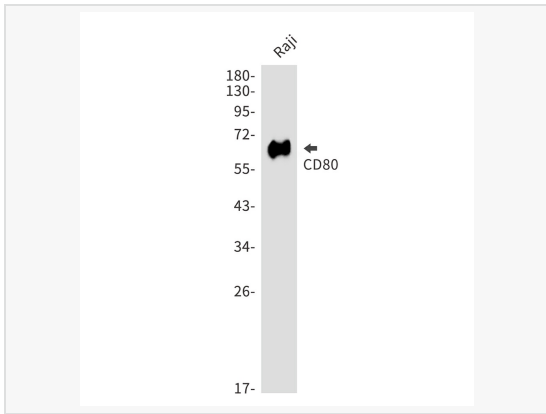
Product Information

Application	WB, IHC-P/IF (Tissue-P), ELISA
Reactivity	Human
Dilution	WB 1:500~1:1,000; IHC-P 1:50~1:100
Host	Rabbit
Clonality	Polyclonal
Isotype	IgG
Label	Unconjugated
Immunogen	A synthetic peptide of human CD80
Format	Buffer System: 50mM Tris-Glycine(pH 7.4), 0.15M NaCl, 40% Glycerol, 0.01% Sodium azide and 0.05% BSA Purification: Affinity Purified.
Storage	Shipped on wet ice. Store at -20°C. Stable for 24 months from date of receipt. Aliquoting is unnecessary for -20°C storage.
Precautions	Anti-CD80 antibody is for research use only and not for use in diagnostic or therapeutic procedures.

Protein Information

Synonyms	CD80, CD28LG, CD28LG1, LAB7, T-lymphocyte activation antigen CD80, Activation B7-1 antigen, BB1, CTLA-4 counter-receptor B71, B7, CD antigen CD80.
Calculated MW	Calculated MW: 33 kDa; Observed MW: 65 kDa
Uniprot ID	P33681
Gene ID	941
Background	Expressed on activated B-cells, macrophages and dendritic cells. Involved in the costimulatory signal essential for T-lymphocyte activation. T-cell proliferation and cytokine production is induced by the binding of CD28 or CTLA-4 to this receptor.

Validation Images



Western blot analysis of CD80 in Raji lysates using CD80 antibody.