

## Anti-CD14 Rabbit pAb

Purified Rabbit Polyclonal Antibody

Catalog # P010117

### Product Information

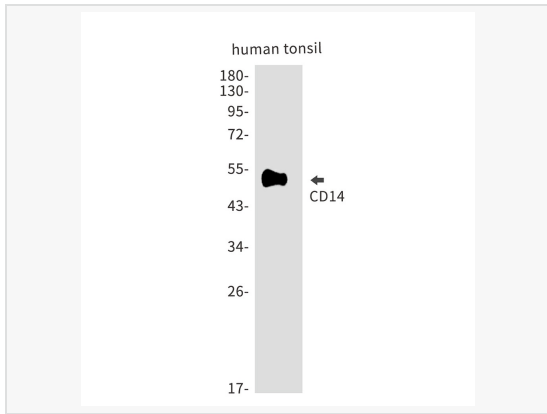
Application	WB, IHC-F/IF (Tissue-F), IHC-P/IF (Tissue-P), ICC/IF (Cell), ELISA
Reactivity	Human
Dilution	WB 1:500~1:1,000; IHC-P 1:50~1:100; IF 1:50~1:200
Host	Rabbit
Clonality	Polyclonal
Isotype	IgG
Label	Unconjugated
Immunogen	A synthetic peptide of human CD14
Format	Buffer System: 50mM Tris-Glycine(pH 7.4), 0.15M NaCl, 40% Glycerol, 0.01% Sodium azide and 0.05% BSA Purification: Affinity Purified.
Storage	Shipped on wet ice. Store at -20°C. Stable for 24 months from date of receipt. Aliquoting is unnecessary for -20°C storage.
Precautions	Anti-CD14 antibody is for research use only and not for use in diagnostic or therapeutic procedures.

### Protein Information

Synonyms	CD14, Monocyte differentiation antigen CD14, Myeloid cell-specific leucine-rich glycoprotein, CD antigen CD14.
Calculated MW	Calculated MW: 40 kDa; Observed MW: 50 kDa
Uniprot ID	P08571
Gene ID	929
Background	CD14 antigen is a GPI-linked glycoprotein with a molecular weight of 55kD. The CD14 antigen is expressed on cells of the myelomonocytic lineage including monocytes, macrophages and Langerhans cells. Low expression is observed on neutrophils and on human B cells. CD14 antigen is a receptor for bacterial lipopolysaccharide (LPS, endotoxin) and the lipopolysaccharide binding protein (LBP). LBP and CD14 antigen serves two physiological roles.

## Validation Images

---



Western blot analysis of CD14 in Human tonsil lysates using CD14 antibody.