

Anti-HP1 gamma Rabbit pAb

Purified Rabbit Polyclonal Antibody

Catalog # P012882

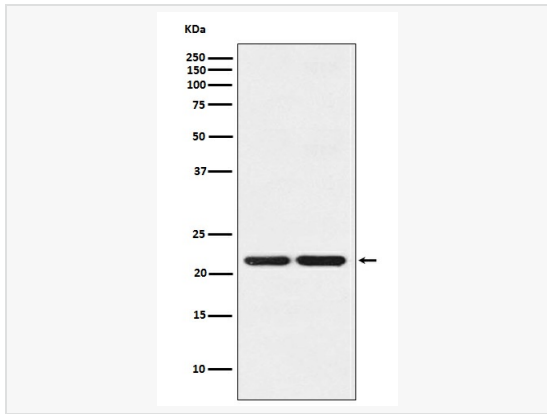
Product Information

Application	WB, IHC-P/IF (Tissue-P), IP, FC, ELISA
Reactivity	Human, Mouse, Rat
Dilution	WB 1:500~1:1,000; IHC-P 1:50~1:100; IP 1:20; FC 1:50~1:100
Host	Rabbit
Clonality	Polyclonal
Isotype	IgG
Label	Unconjugated
Immunogen	A synthesized peptide derived from human HP1 gamma
Format	Buffer System: Rabbit IgG in phosphate buffered saline, pH 7.4, 150mM NaCl, 0.02% sodium azide and 50% glycerol. Purification: Affinity Chromatography
Storage	Shipped on wet ice. Store at -20°C. Stable for 24 months from date of receipt. Aliquoting is unnecessary for -20°C storage.
Precautions	Anti-HP1 gamma antibody is for research use only and not for use in diagnostic or therapeutic procedures.

Protein Information

Synonyms	CBX3, Chromobox protein homolog 3, HECH, Heterochromatin protein 1 homolog gamma, HP1 gamma, Modifier 2 protein.
Calculated MW	Calculated MW: 21 kDa; Observed MW: 24 kDa
Uniprot ID	Q13185
Gene ID	11335
Background	Recognizes and binds histone H3 tails methylated at 'Lys-9', leading to epigenetic repression. May contribute to the association of the heterochromatin with the inner nuclear membrane through its interaction with lamin B receptor (LBR). Involved in the formation of functional kinetochore through interaction with MIS12 complex proteins.

Validation Images



Western blot analysis of HP1 gamma in (1) HeLa lysates; (2) NIH/3T3 lysates using HP1 gamma antibody.