

Anti-Axin 2 Rabbit pAb

Purified Rabbit Polyclonal Antibody

Catalog # P011075

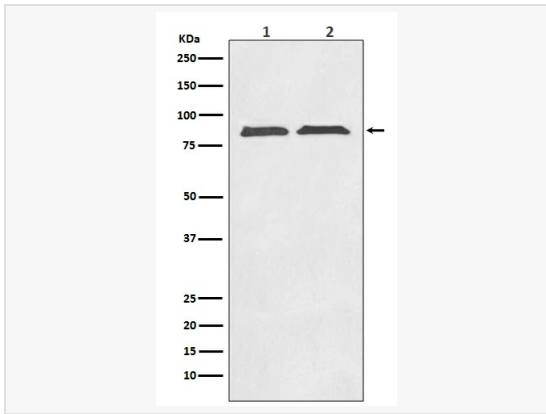
Product Information

Application	ELISA, WB, IHC-P/IF (Tissue-P), ICC/IF (Cell)
Reactivity	Human, Mouse, Rat
Dilution	WB 1:500~1:1,000; IHC-P 1:50~1:100; IF 1:50~1:200
Host	Rabbit
Clonality	Polyclonal
Isotype	IgG
Label	Unconjugated
Immunogen	A synthesized peptide derived from human Axin2
Format	Buffer System: Rabbit IgG in phosphate buffered saline, pH 7.4, 150mM NaCl, 0.02% sodium azide and 50% glycerol. Purification: Affinity Chromatography
Storage	Shipped on wet ice. Store at -20°C. Stable for 24 months from date of receipt. Aliquoting is unnecessary for -20°C storage.
Precautions	Anti-Axin 2 antibody is for research use only and not for use in diagnostic or therapeutic procedures.

Protein Information

Synonyms	Axil, Axin like protein, Axin2, Axis inhibition protein 2, Conductin.
Calculated MW	Calculated MW: 94 kDa; Observed MW: 94 kDa
Uniprot ID	Q9Y2T1
Gene ID	8313
Background	Axin1 (Axis inhibition protein 1) and Axin2 are multidomain scaffold proteins that negatively regulate Wnt signaling. Axin1 interacts with APC, GSK-3 β , Dvl, and β -catenin and promotes the GSK-3 β -mediated phosphorylation and subsequent degradation of β -catenin. Down-regulates beta-catenin.

Validation Images



Western blot analysis of Axin2 in (1) SW480 lysates; (2) PC-12 lysates using Axin 2 antibody.