

Anti-Cytochrome C Rabbit pAb

Purified Rabbit Polyclonal Antibody

Catalog # P010637

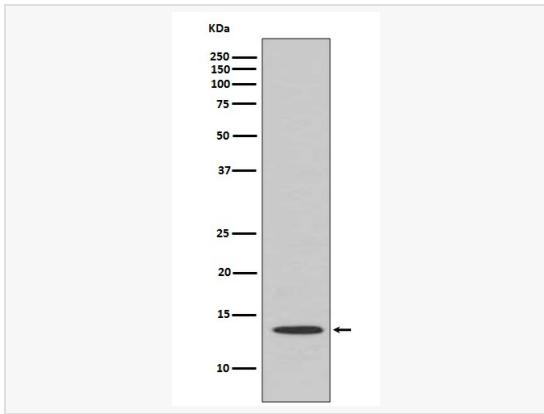
Product Information

Application	WB, IHC-P/IF (Tissue-P), ICC/IF (Cell), IP, ELISA
Reactivity	Human, Mouse, Rat
Dilution	WB 1:500~1:1,000; IHC-P 1:50~1:100; IF 1:50~1:200; IP 1:20
Host	Rabbit
Clonality	Polyclonal
Isotype	IgG
Label	Unconjugated
Immunogen	A synthesized peptide derived from human Cytochrome C
Format	Buffer System: Rabbit IgG in phosphate buffered saline, pH 7.4, 150mM NaCl, 0.02% sodium azide and 50% glycerol. Purification: Affinity Chromatography
Storage	Shipped on wet ice. Store at -20°C. Stable for 24 months from date of receipt. Aliquoting is unnecessary for -20°C storage.
Precautions	Anti-Cytochrome C antibody is for research use only and not for use in diagnostic or therapeutic procedures.

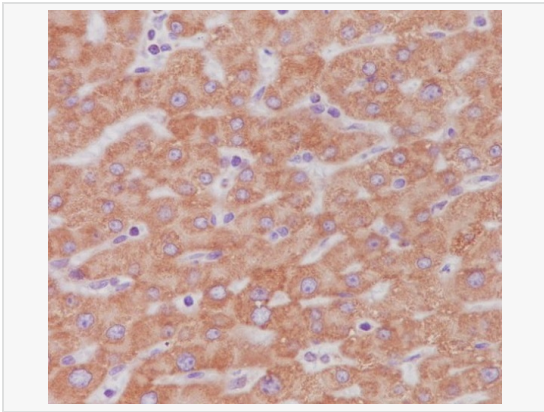
Protein Information

Synonyms	CYCS, CYC, Cytochrome c.
Calculated MW	Calculated MW: 12 kDa; Observed MW: 12 kDa
Uniprot ID	P99999
Gene ID	54205
Background	CYCS Electron carrier protein. The oxidized form of the cytochrome c heme group can accept an electron from the heme group of the cytochrome c1 subunit of cytochrome reductase. Cytochrome c then transfers this electron to the cytochrome oxidase complex, the final protein carrier in the mitochondrial electron-transport chain.

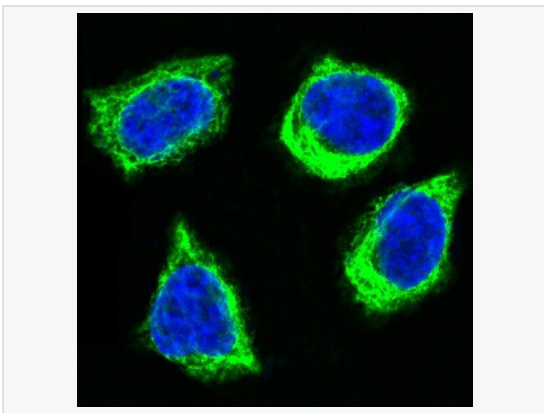
Validation Images



Western blot analysis of Cytochrome C in Human kidney lysates using Cytochrome C antibody.



Immunohistochemistry analysis of paraffin-embedded Human liver using Cytochrome C antibody. High-pressure and temperature Sodium Citrate pH 6.0 was used for antigen retrieval.



Immunofluorescence analysis of Cytochrome C in HeLa using Cytochrome C antibody.