

## Anti-CD31 Rabbit pAb

Purified Rabbit Polyclonal Antibody

Catalog # P010173

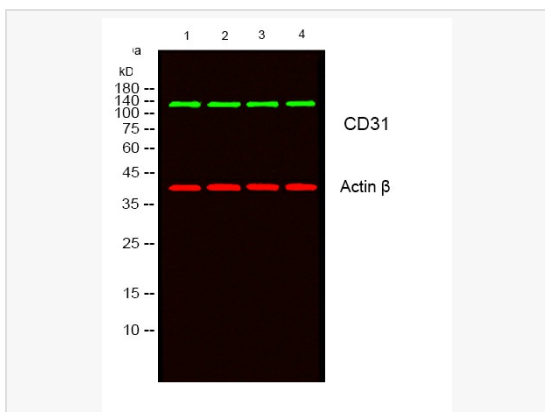
### Product Information

<b>Application</b>	WB, IHC-F, IHC-P, ICC/IF, ELISA
<b>Reactivity</b>	Human, Mouse
<b>Dilution</b>	WB 1:500~1:1,000; IHC-P 1:50~1:100; IF 1:50~1:200; ELISA 1:10,000
<b>Host</b>	Rabbit
<b>Clonality</b>	Polyclonal
<b>Isotype</b>	IgG
<b>Target / Specificity</b>	synthesized peptide of human PECAM-1.
<b>Format</b>	Buffer System: Liquid in PBS containing 50% glycerol, 0.5% BSA and 0.02% sodium azide, pH 7.3. Purification: Affinity Purified.
<b>Storage</b>	Shipped at 4°C. Upon delivery aliquot. Store at 4°C short term (1~2 weeks). Store at -20°C for 2 years. Avoid freeze / thaw cycles.
<b>Precautions</b>	Anti-CD31 antibody is for research use only and not for use in diagnostic or therapeutic procedures.

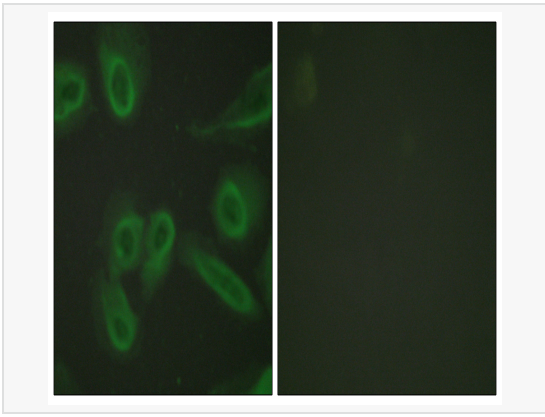
### Protein Information

<b>Other Names</b>	Platelet endothelial cell adhesion molecule, PECAM-1, EndoCAM, GPIIA', PECA1, CD antigen CD31.
<b>Calculated MW</b>	Calculated MW: 83 kDa; Observed MW: 130-140 kDa
<b>Primary Accession</b>	P16284
<b>Gene ID</b>	5175
<b>Background</b>	PECAM-1 a cell adhesion molecule expressed on platelets and at endothelial cell intercellular junctions. Plays a role in modulation of integrin-mediated cell adhesion, transendothelial migration, angiogenesis, apoptosis, cell migration, negative regulation of immune cell signaling, autoimmunity, macrophage phagocytosis, IgE-mediated anaphylaxis and thrombosis. Undergoes alternative splicing, generating multiple isoforms in vascular beds of various tissues.

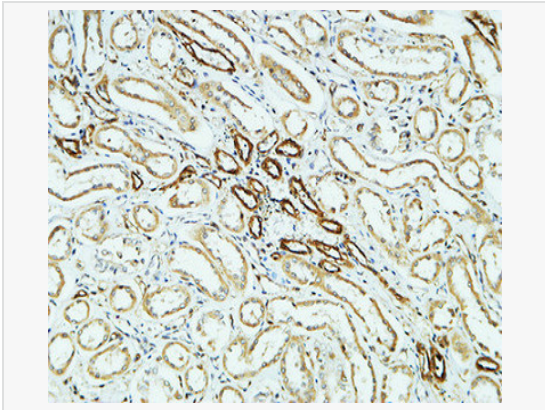
### Validation Images



Western blot analysis of CD31 in HepG2, K562, L929, mouse brain lysates using CD31 antibody.



Immunofluorescence analysis of CD31 in HeLa using CD31 antibody. The picture on the right is blocked using synthesized peptide.



Immunohistochemistry analysis of paraffin-embedded CD31 in paraffin-embedded Human kidney using CD31 antibody. High-pressure and temperature Sodium Citrate pH 6.0 was used for antigen retrieval.