

Anti-Vimentin Rabbit mAb

Purified Rabbit Monoclonal Antibody

Catalog # R010790

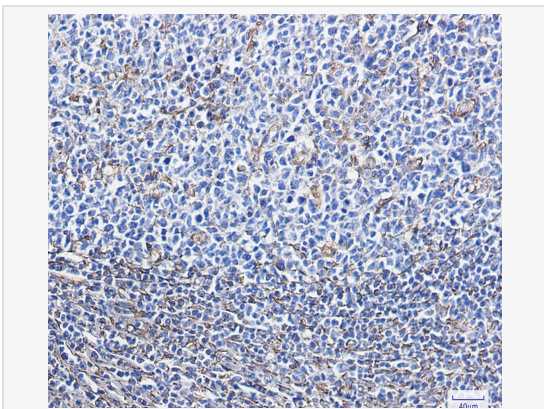
Product Information

Application	WB, IHC-F, IHC-P, ICC/IF, ELISA
Reactivity	Human, Mouse, Rat, Hamster
Dilution	WB 1:500~1:1,000; IHC-P 1:50~1:100; IF 1:50~1:200
Host	Rabbit
Clonality	Monoclonal
Clone No.	30L14K32
Isotype	IgG
Target / Specificity	A synthetic peptide of human Vimentin
Format	Buffer System: 50mM Tris-Glycine(pH 7.4), 0.15M NaCl, 40% Glycerol, 0.01% Sodium azide and 0.05% BSA Purification: Affinity Purified.
Storage	Shipped at 4°C. Upon delivery aliquot. Store at 4°C short term (1~2 weeks). Store at -20°C for 2 years. Avoid freeze / thaw cycles.
Precautions	Anti-Vimentin antibody [30L14K32] is for research use only and not for use in diagnostic or therapeutic procedures.

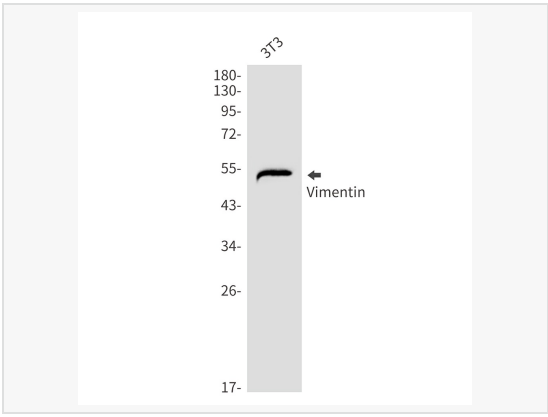
Protein Information

Other Names	VIM, Vimentin.
Calculated MW	Calculated MW: 54 kDa; Observed MW: 54 kDa
Primary Accession	P08670
Gene ID	7431
Background	Vimentin an intermediate filament protein. Intermediate filament proteins are expressed in a tissue-specific manner. Desmin is the subunit specific for muscle and vimentin the subunit specific for mesenchymal tissue.

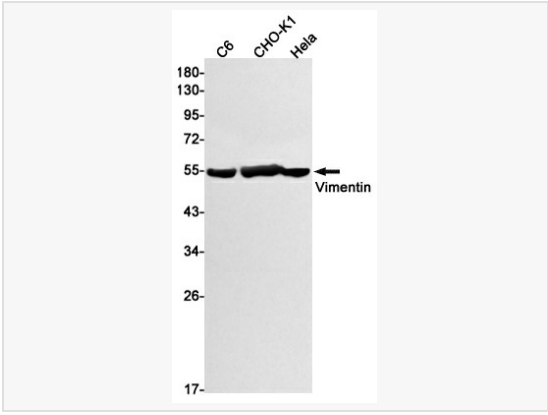
Validation Images



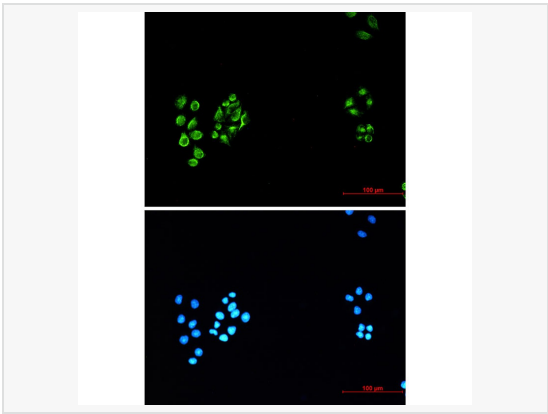
Immunohistochemistry analysis of paraffin-embedded Human tonsil using Vimentin antibody. High-pressure and temperature Sodium Citrate pH 6.0 was used for antigen retrieval.



Western blot analysis of Vimentin in 3T3 lysates using Vimentin antibody.



Western blot analysis of Vimentin in C6, CHO-K1, HeLa lysates using Vimentin antibody.



Immunocytochemistry analysis of Vimentin (green) in HeLa using Vimentin antibody and DAPI (blue) .