

Anti-Bcl2 Rabbit pAb

Purified Rabbit Polyclonal Antibody

Catalog # P012161

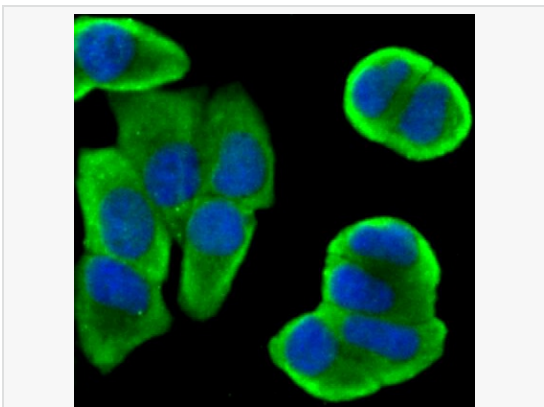
Product Information

Application	WB, IHC-P, ICC/IF, FC, ELISA
Reactivity	Human, Mouse
Dilution	WB 1:500~1:1,000; IHC-P 1:50~1:100; IF 1:50~1:200; FC 1:50~1:100
Host	Rabbit
Clonality	Polyclonal
Isotype	IgG
Target / Specificity	A synthesized peptide derived from human Bcl-2
Format	Buffer System: Rabbit IgG in phosphate buffered saline, pH 7.4, 150mM NaCl, 0.02% sodium azide and 50% glycerol. Purification: Affinity Chromatography
Storage	Shipped at 4°C. Upon delivery aliquot. Store at 4°C short term (1~2 weeks). Store at -20°C for 2 years. Avoid freeze / thaw cycles.
Precautions	Anti-Bcl2 antibody is for research use only and not for use in diagnostic or therapeutic procedures.

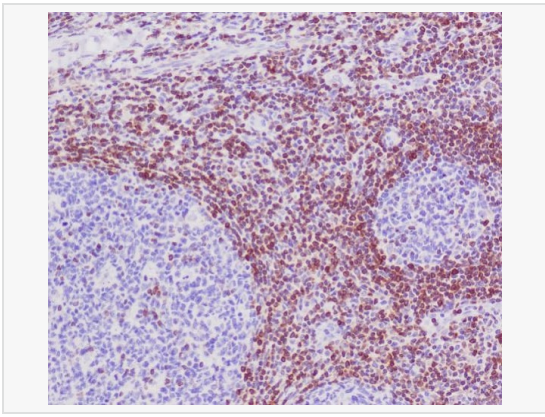
Protein Information

Other Names	BCL2, Apoptosis regulator Bcl-2.
Calculated MW	Calculated MW: 26 kDa; Observed MW: 26 kDa
Primary Accession	P10415
Gene ID	596
Background	This gene encodes an integral outer mitochondrial membrane protein that blocks the apoptotic death of some cells such as lymphocytes. Constitutive expression of BCL2, such as in the case of translocation of BCL2 to Ig heavy chain locus, is thought to be the cause of follicular lymphoma.

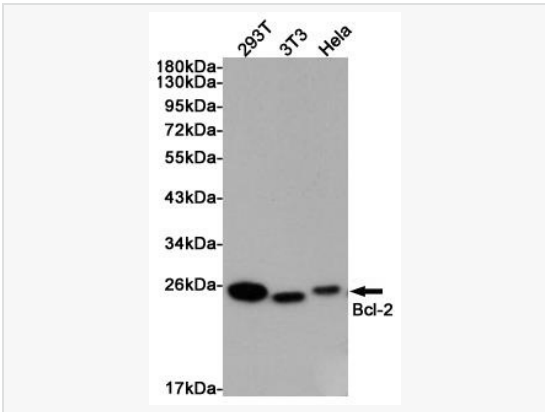
Validation Images



Immunocytochemistry analysis of Bcl2 (green) in MCF-7 using Bcl2 antibody and DAPI (blue)



Immunohistochemistry analysis of paraffin-embedded Human tonsil using Bcl2 antibody. High-pressure and temperature Sodium Citrate pH 6.0 was used for antigen retrieval.



Western blot analysis of Bcl2 in 293T, 3T3 and HeLa lysates using Bcl2 antibody.