

# $\alpha$ -tubulin兔多克隆抗体

$\alpha$ -tubulin Rabbit Polyclonal Antibody

本产品冰袋运输；-20°C保存12个月。

## 货号规格

货号	规格
LF210	100 $\mu$ L
LF210S	20 $\mu$ L

## 产品简介

本抗体为兔多克隆抗体。微管是细胞骨架的重要组成部分，存在于所有哺乳动物细胞。它由分子量约55 kDa 的 $\alpha$ 微管蛋白 ( $\alpha$ -Tubulin) 和 $\beta$ 微管蛋白 ( $\beta$ -Tubulin) 组成，并以 $\alpha\beta$ 异源二聚体的形式存在。其中 $\beta$ -Tubulin 蛋白表达水平相对恒定，常被用于 Western Blot 检测时校正系统的内参照。

**缓冲液** 10 mM PBS(pH 7.4), 50% glycerol

**防腐剂** 0.02% sodium azide

**应用种属** 人、大鼠、小鼠、兔

**应用范围** Western Blot(WB)、Immunohistochemistry(IHC)、Immunofluorescence(IF)

**推荐浓度** (最适浓度需根据具体情况调试)

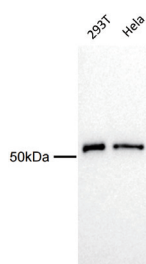
Western Blot: 1:1,000 ~ 1:5,000;

Immunohistochemistry: 1:1,000;

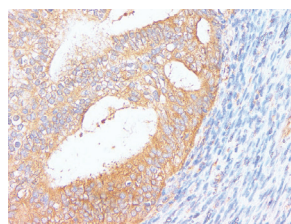
Immunofluorescence: 1:1,000。

## 注意事项

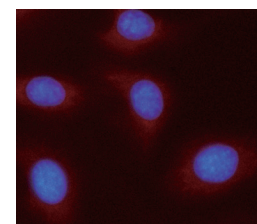
1. 为了获得实验最佳效果，请根据实验调整最佳工作稀释度；
2. 为了您的安全和健康，请穿实验服并戴一次性手套操作；
3. 本产品仅限科研使用。



All lanes: Anti- $\alpha$ -Tubulin Rabbit pAb at 1:1,000 dilution  
Lane 1: 293T cell Lysates  
Lane 2: HeLa cell Lysates  
Lysates/proteins at 20  $\mu$ g per lane.  
Secondary Goat Anti-Rabbit IgG, (H+L), Peroxidase conjugated (LF102) at 1:5,000 dilution.  
Observed band size: 55 kDa  
Blocking/Dilution buffer: 1 $\times$ PBST.



Immunohistochemical analysis of paraffin-embedded Endometrial cancer tissue using Anti- $\alpha$ -Tubulin Rabbit pAb. Samples were incubated with primary antibody (1:1,000) overnight at 4°C. A HRP-Conjugated anti-rabbit IgG (LF102) was used as the secondary antibody for 0.5 hour.



Immunofluorescent analysis of HeLa cells using Anti- $\alpha$ -tubulin at dilution of 1:1,000 with DAPI as a counterstain for visualizing the nucleus (blue). Tubulin is a cytoskeletal protein important in cell division and migration and was visualized with Cy3 dye (Red).