

β-actin兔多克隆抗体

β-actin Rabbit Polyclonal Antibody

本产品冰袋运输；-20℃保存12个月。

货号规格

货号	规格
LF202	100 μL
LF202S	20 μL

产品简介

本抗体为兔多克隆抗体,β-actin 的抗体是研究其在细胞内的分布和细胞骨架的有力工具。β-actin 是横纹肌纤维中的一种主要蛋白质,也是肌肉细丝及细胞骨架微丝的主要成分。它分布广泛,分子量为42 kDa,具有高度保守性,在细胞中的表达相对稳定,因此常被用于校正系统的内参。

缓冲液 10 mM PBS(pH 7.4), 50% glycerol

防腐剂 0.02% sodium azide

应用种属 人、大鼠、小鼠、猴、鸡、仓鼠、绵羊、非洲爪蟾

应用范围 Western Blot(WB)、Immunohistochemistry(IHC)、Immunofluorescence(IF)

推荐浓度 (最适浓度需根据具体情况调试)

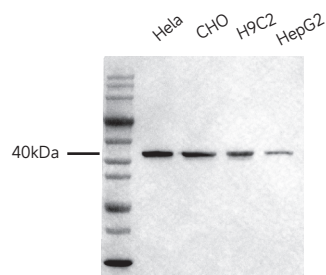
Western Blot: 1:1,000 ~ 1:5,000;

Immunohistochemistry: 1:1,000;

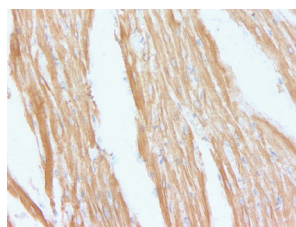
Immunofluorescence: 1:1,000。

注意事项

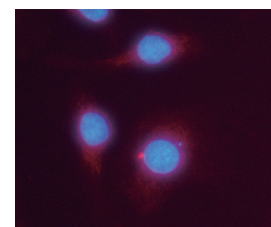
1. 为了获得实验最佳效果,请根据实验调整最佳工作稀释度;
2. 为了您的安全和健康,请穿实验服并戴一次性手套操作;
3. 本产品仅限科研使用。



All lanes: Anti-β-Actin Rabbit pAb at 1:5,000 dilution
 Lane 1: HeLa cell Lysates
 Lane 2: CHO cell Lysates
 Lane 3: H9C2 cell Lysates
 Lane 4: HepG2 cell Lysates
 Lysates/proteins at 20 μg per lane.
 Secondary Goat Anti-Rabbit IgG, (H+L), Peroxidase conjugated (LF102) at 1:10,000 dilution.
 Observed band size: 42 kDa
 Blocking/Dilution buffer: 1×PBST.



Immunohistochemical analysis of paraffin-embedded Heart tissue using Anti-β-Actin Rabbit pAb. Samples were incubated with primary antibody (1:1000) overnight at 4°C. A HRP-labeled anti-rabbit IgG (LF102) was used as the secondary antibody for 0.5 hour.



Immunofluorescent analysis of HeLa cells using Anti-β-actin Rabbit pAb at dilution of 1:1,000 and was visualized with Cy3 dye(Red).